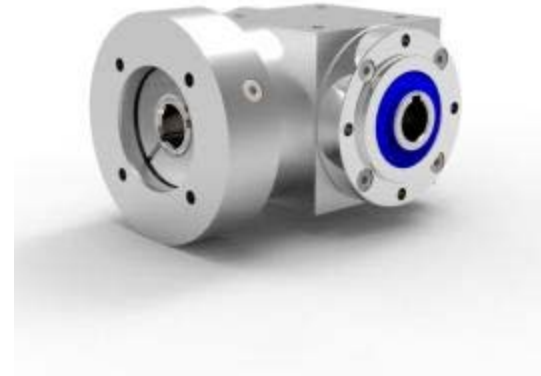


Atek gmbh high res_photo



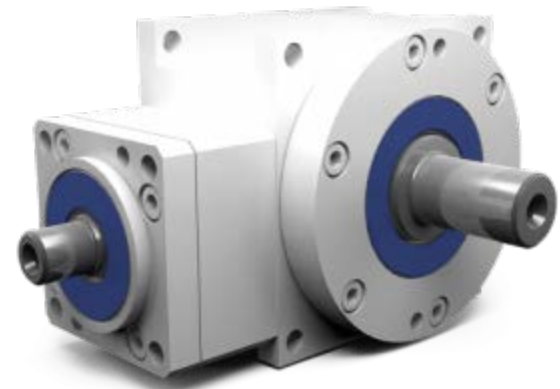
19992-2903561



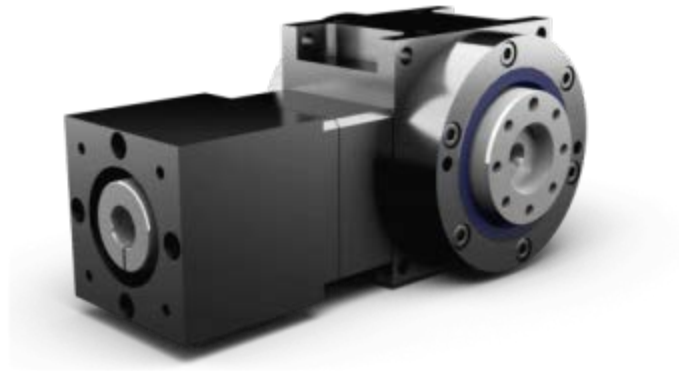
19992-12733274



kegelradgetriebe_x2



typ_h_090_x2-1-600x414



typ_hc_090_x2_neu-600x414



typ_l_x2_neu-600x414



typ_sc_040_x2_neu-600x414

Conic System High res_photo



CSF Gearhead (1)



CSF-032-160-M1 (corrected)



group claen



Group shot (1)



HDA-025-120-M1



HDB-025-160



HDC-4M-080-E1



HDF



HDR-020-160-E3



LT Gearheads (1)

Nidec girard photo



7625-2529243



7625-2762793



Girard Template



girard



gt_photo-2-couv_s600x600



reductores-vis-sin-fin-dynabox

Shimpo flexwave highres photo 1



coronex 1 coronex 1



coronex



flexwave4



flexwave 2



flexwave 3

Shimpo flexwave highres photo 2



ptm04_001-thumb-370xauto-27



ptm04_002-thumb-370xauto-29



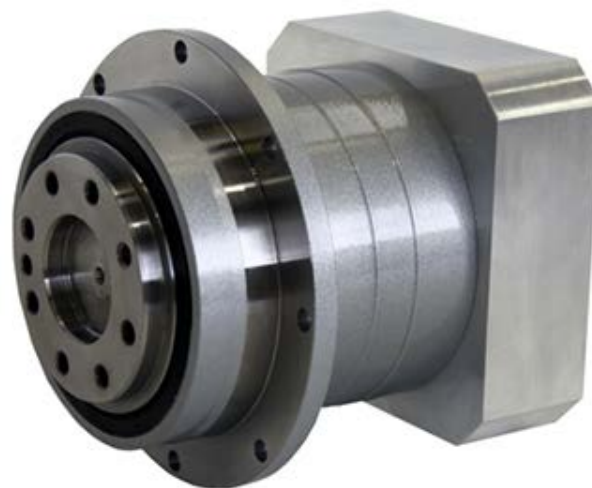
ptm04_003-thumb-370xauto-31



ptm04_004-thumb-370xauto-33



ptm04_005-thumb-370xauto-35



ptm04_006-thumb-370xauto-37

TAS high res_photo



3015-NIRO



3020-NIRO



3071-200 NIRO



3173-NIRO



FAD-180-400-590



FKE-220_4



IMG_5267



Reibungsfeder

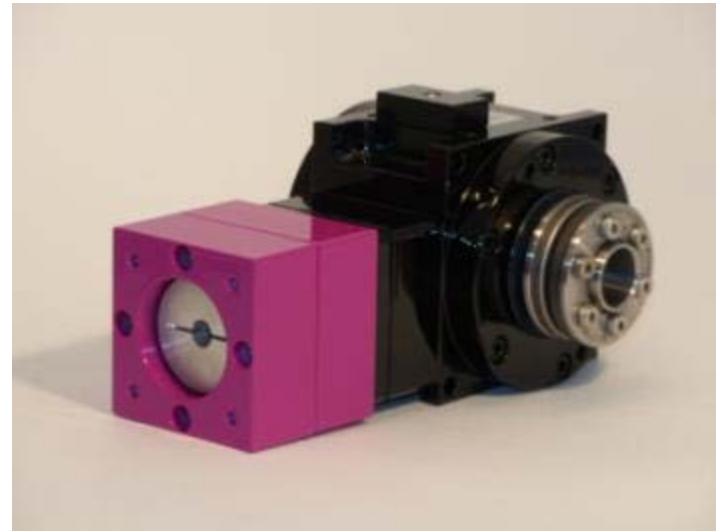


TAS-Produkte-home2-400x400

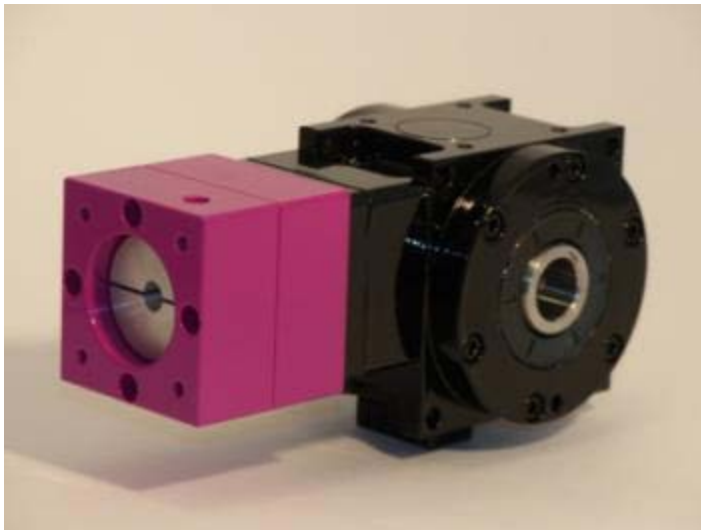
ATEK Getriebe Hypoid



Hypoid-Getriebe-1000473



Hypoid-Getriebe-1000480



Hypoid-Getriebe-1000484



Hypoid-Getriebe-1000490



Hypoid-Getriebe-1000495



Hypoid-Getriebe-1000498

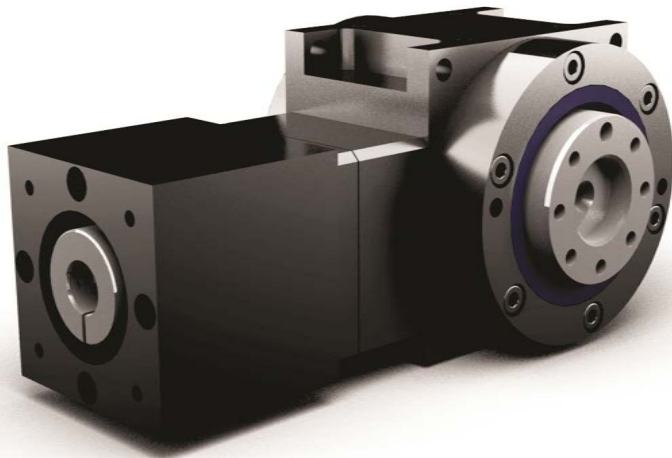
ATEK Getriebe Neue Katalogbilder



ATEK_ESA_1



Edelstahlgetriebe



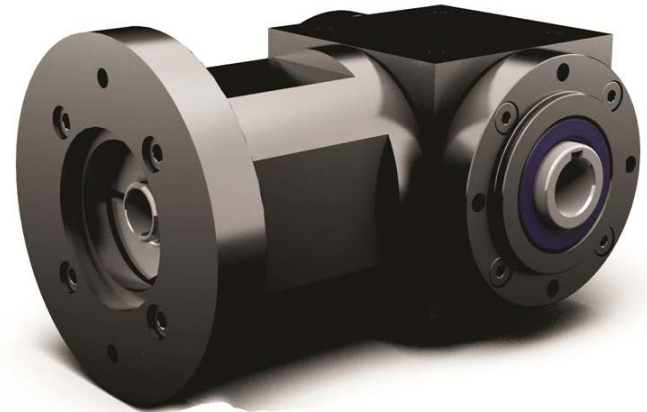
HC_090_schwarz



HDV_Bild



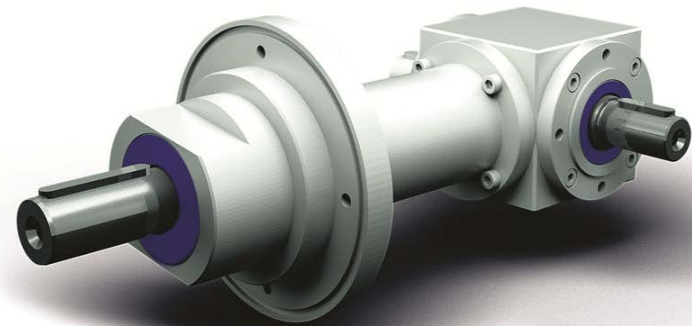
L_35_45_2



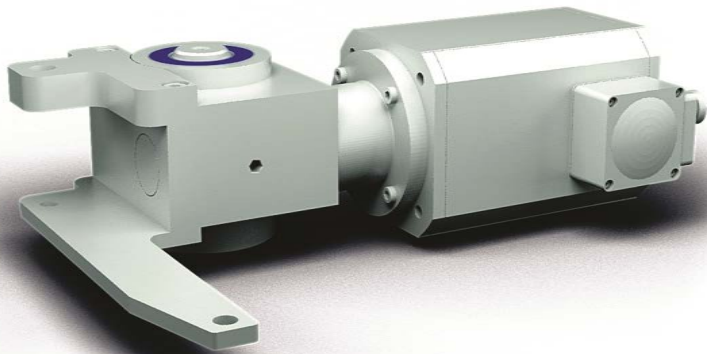
LC_schwart



M100_388



M100_1652



M100_1657



S_40_100



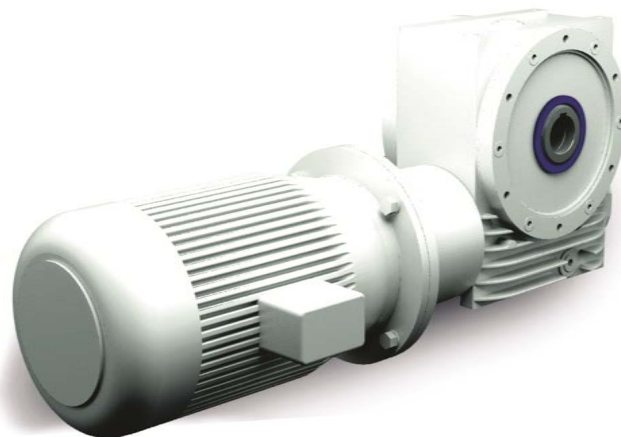
S_125_250



SC_schwarz



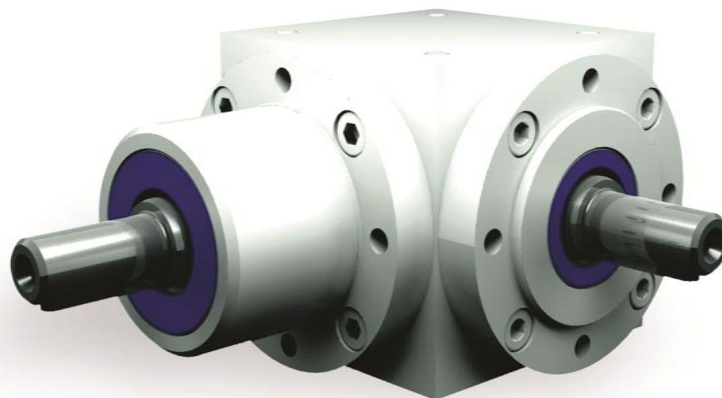
SL_040_100



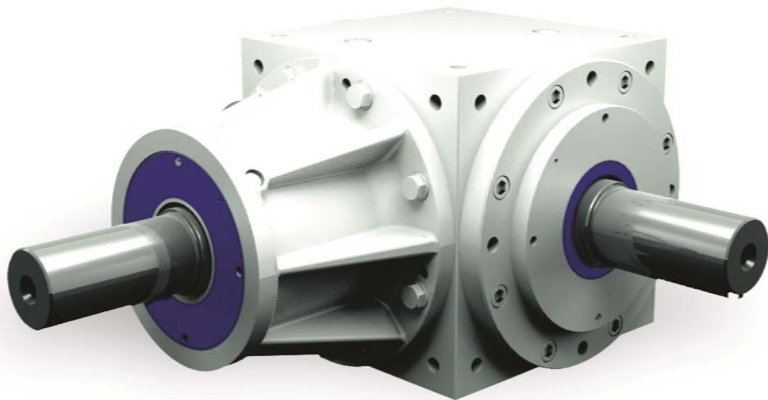
SLM_125_250



V_65_140



V_160_260



V_350



VC_schwarz



VC_schwarz_160_220



VL_160_260



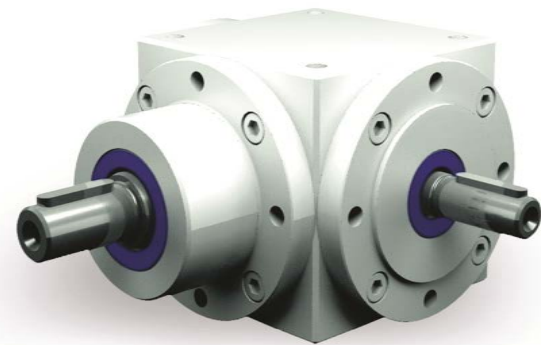
VLM_065_140



VLM_160_260



VLM_EMA5834



VS_90_140



VS_160_260